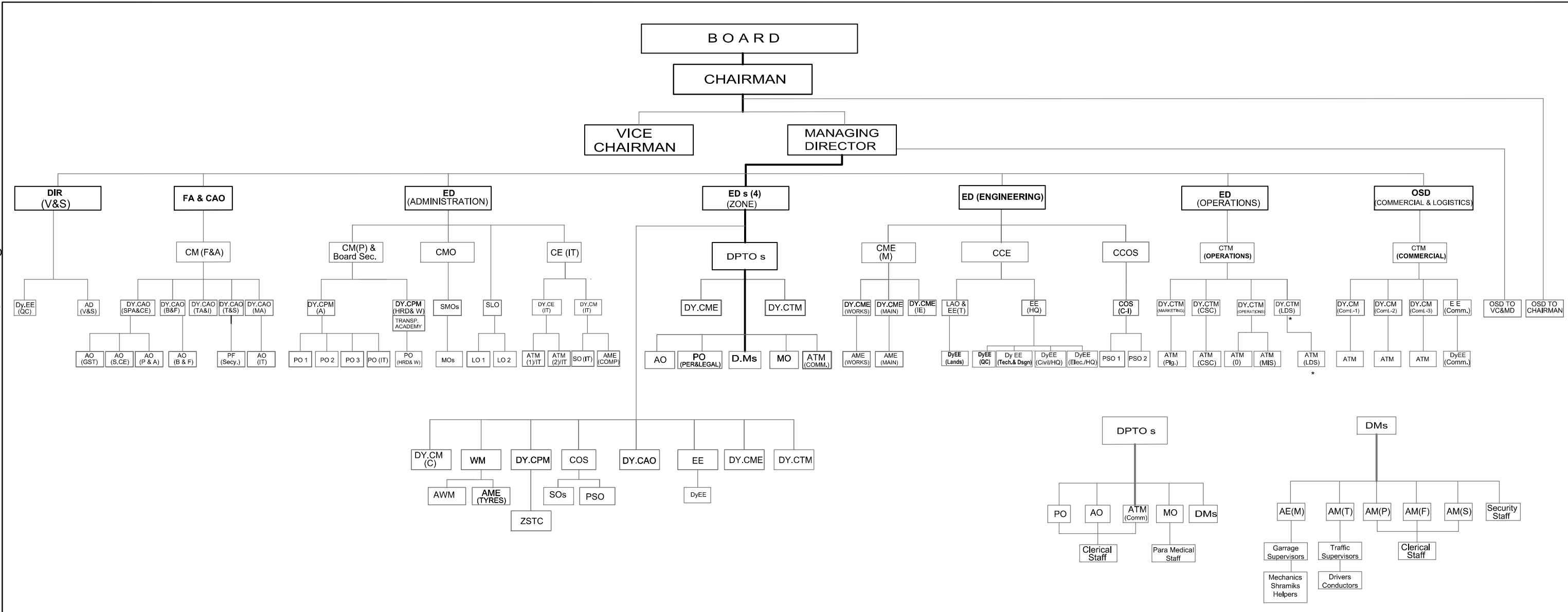


HIERARCHY STRUCTURE OF A.P.P.T.D (APS RTC) (July- 2024)

CORPORATE OFFICE
ED
HOD
SSO
ZONES



LEGEND	
VC & MD	VICE CHAIRMAN & MANAGING DIRECTOR
DIR (V&S)	DIRECTOR (VIGILANCE & SECURITY)
FA	FINANCIAL ADVISER
CAO	CHIEF ACCOUNTS OFFICER
ED	EXECUTIVE DIRECTOR
A	ADMINISTRATION
E	ENGINEERING
O	OPERATIONS
DPTO	DISTRICT PUBLIC TRANSPORT OFFICER
CCE	CHIEF CIVIL ENGINEER
CCOS	CHIEF CONTROLLER OF STORES
CE(IT)	CHIEF ENGINEER(IT)
CM (A & F)	CHIEF MANAGER (AUDIT & FINANCE)
CME (P)	CHIEF MECHANICAL ENGINEER (PRODUCTION)
CME(O)	CHIEF MECHANICAL ENGINEER (OPERATIONS)
CMO	CHIEF MEDICAL OFFICER
CM (P) & BS	CHIEF MANAGER (PERSONNEL) & BOARD SECRETARY
CTM	CHIEF TRAFFIC MANAGER
CM (C)	CHIEF MANAGER (COMMERCIAL)
SSO	SENIOR SCALE OFFICER
COS	CONTROLLER OF STORES
DY.CAO	DEPUTY CHIEF ACCOUNTS OFFICER
DY.CME	DEPUTY CHIEF MECHANICAL ENGINEER
DY.CPM	DEPUTY CHIEF PERSONNEL MANAGER
DY.CTM	DEPUTY CHIEF TRAFFIC MANAGER
EE	EXECUTIVE ENGINEER
LAO	LAND ACQUISITION OFFICER
SLO	SENIOR LAW OFFICER
S MO	SENIOR MEDICAL OFFICERS
WM	WORKS MANAGER
OSD	OFFICER ON SPECIAL DUTY
BS	BUS STATIONS

DM	DEPOT MANAGER
AME	ASST.MECHANICAL ENGINEER
AO	ACCOUNTS OFFICER
ATM	ASST. TRAFFIC MANAGER
AWM	ASST.WORKS MANAGER
DY.EE	DEPUTY EXECUTIVE ENGINEER
MO	MEDICAL OFFICER
PO	PERSONNEL OFFICER
PSO	PURCHASE OFFICER
SO	STORES OFFICER
PRO	PUBLIC RELATION OFFICER
IE	INDUSTRIAL ENGINEERING
COMM	COMMERCIAL
HRD & W	HUMAN RESOURCE DEVELOPMENT & WELFARE
MIS	MANAGEMENT INFORMATION SYSTEM
COMP	COMPUTERS
CSC	CENTRAL SCHEDULE CELL
PLG	PLANNING
IT	INFORMATION TECHNOLOGY
LDS	LONG DISTANCE SERVICES
W	WELFARE
MA&IT	MAIN ACCOUNTS & INCOME TAX
NECR	NORTH EAST COASTAL REGION
P&D	PLANNING & DESIGNING
QC	QUALITY CONTROL
SCH	SCHEDULES
SPA&CE	STORES PAY ALLOWANCES&CAPITAL EXPENDITURE
TA	TRANSPORT ACADEMY
TRS	TYRE RETREADING SHOP
T&S	TRUSTS & SCHEMES
ZWS	ZONAL WORK SHOP
ZSTC	ZONAL STAFF TRAINING COLLEGE
C	CONTRACT CELL
B & F	BUDGET & FINANCE
SRBS	STAFF RETIREMENT BENEFIT SCHEME
SBT	STAFF BENEVOLENT-CUM- THRIFT FUND
C & B	CHASSIS & BODY

TOTAL MAN POWER = 47,687 (As on 1st July 2024)
(EXCLUDING OFFICERS)

TOTAL OFFICERS = 362

HEAD OFFICE UNITS : TA , & WIND ENERGY PROJECT-Ramagiri(10MW)

A.P. STATE AREA	
ZONES	4
DPTO s	26
DEPOTS	129
TOTAL BUSES (RTC + HIRED+ BADI BUSSULU)	7,140 + 2,508 + 387= 10,035 (As on 1st July 2024)
ZSTC	4
ZWSs	4
TRSs	4
TA	1

UNITS COVERED IN EACH ZONE

ED(VZM) - ZONE I	ED(VJA) - ZONE II	ED(NLR) - ZONE III	ED(KDP) - ZONE IV
VIZIANAGARAM ZONE(17)	VIJAYAWADA ZONE (31)	NELLORE ZONE (26)	KADAPA ZONE (53)
SKLM (4)	KKD (4)	GUNTUR (5)	TPTY (11)
VZM (2)	KONASEEMA (4)	PALNADU (6)	CTR (6)
MANYAM (3)	WEST GODAVARI (3)	BAPATLA (4)	ANNAMAIAH (5)
AKP (2)	EAST GODAVARI (4)	PKRM (5)	KDP (6)
ASR (1)	ELURU (3)	NLR (6)	KRNL (5)
VSP (7)	NTR (8)		NDL (7)
	KRISHNA (5)		ATP (7)
			SSS (6)
ZWS - VZM	ZWS - VJA	ZWS - NLR	ZWS - KDP
TRS - VZM	TRS - VJA	TRS - NLR	TRS - KDP
ZSTC- VZM	ZSTC- VDPM	ZSTC- NLR	ZSTC- KURNOOL

VZM → VIZIANAGARAM VJA → VIJAYAWADA NLR → NELLORE KDP → KADAPA

NOTE : SHOWN UP TO JUNIOR SCALE OFFICER CADRE AT CORPORATE OFFICE, THE NO. OF DEPOTS INDICATED IN BRACKETS

HEAD OFFICE SHIFTED FROM HYDERABAD TO VIJAYAWADA on 27 - 06 - 2016